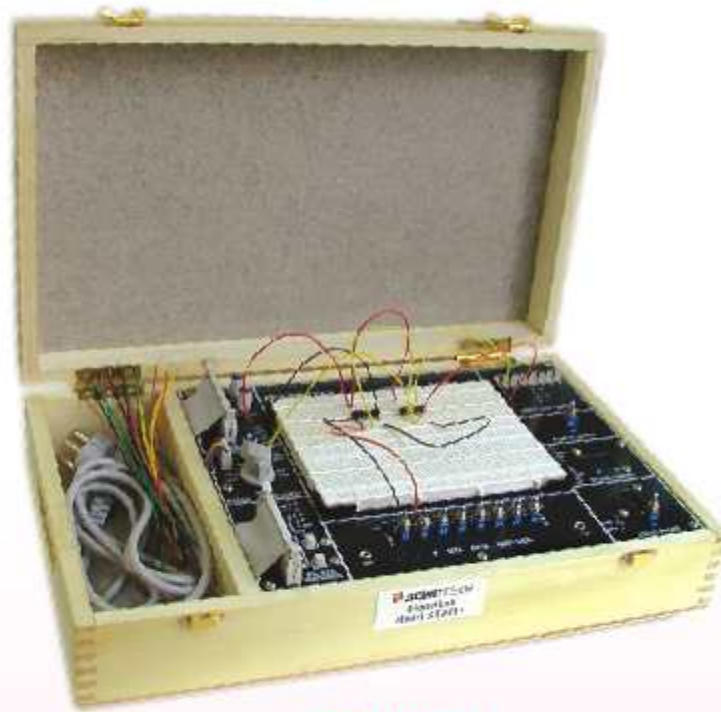


Your ^{Most} comprehensive self contained Digital Training System

With optional ready to use Circuit boards



2Yr Warranty

Experiments

1. To study operation of all logic gates.
2. Binary Addition : Half Adder, Full Adder, 2 bit binary Parallel adder.
3. Binary Subtraction.
4. Binary to Gray Code Conversion.
5. Gray Code to Binary Conversion.
6. Binary to Excess-3 Code Conversion.
7. R-S, J-K, T, D, Master-Slave FlipFlops.
8. Crystal Oscillator.
9. 4 Bit Up Down Counter.
10. Johnson Counter.
11. Shift Registers.
12. Encoder and Decoder.
13. Multiplexer and demultiplexer circuits.
14. Pulse Stretcher circuit.
15. CMOS-TTL Interface... and many more.

Features

- ★ Self contained & easy to operate.
- ★ Functional blocks indicated on board mimic.
- ★ Solderless Breadboard.
- ★ On Board DC Power supply, 1 MHz Pulse Generator with TTL/CMOS mode.
- ★ Pulser switches, 8 bit data switches.
- ★ Bicolour LED display, Built-in Logic probe.
- ★ BCD to Seven Segment Display.
- ★ CMOS/TTL outputs.
- ★ High finish Alpine wood cabinet & blue Glass epoxy PCB.
- ★ More than 20 designed experiments for bread board.
- ★ Optional ready to use Circuit boards.

... the best learning tools !

DIGITAL LAB ST2611



Technical Specifications

Breadboard :172.5 mm x 128.5 mm Breadboard for making various circuits and testing them. External components can be fitted conveniently. All components and breadboard are mounted on Glass epoxy PCB. Interconnection through detachable flat ribbon cables. Rotary switch with DAP material.

Tie Points :1685.

Regulated DC Power Supply (using low loss R core transformer) : +5V-1A, 5V 500mA, 3V-15V 500mA (variable), -3V-15V, 500 mA (variable)

Frequency range : 1 Hz to 1 MHz in 6 steps.
Variable in between steps.

Amplitude : 3V-15V(CMOS), 5 V (TTL).

Duty cycle : 50 %. TTL/CMOS Output.

Pulser Switches : 2 Nos.(Push to On).

Data switches : 8 Nos.(Toggle switches for both TTL & CMOS).

LED display : 8 Nos. (TTL/CMOS Mode).

Seven Segment Display : 3 Nos.

Logic Probe : Logic level indicator for TTL/CMOS.

Power : 230V + 10%, 50 Hz.

Weight : 3 kgs. (Approx).

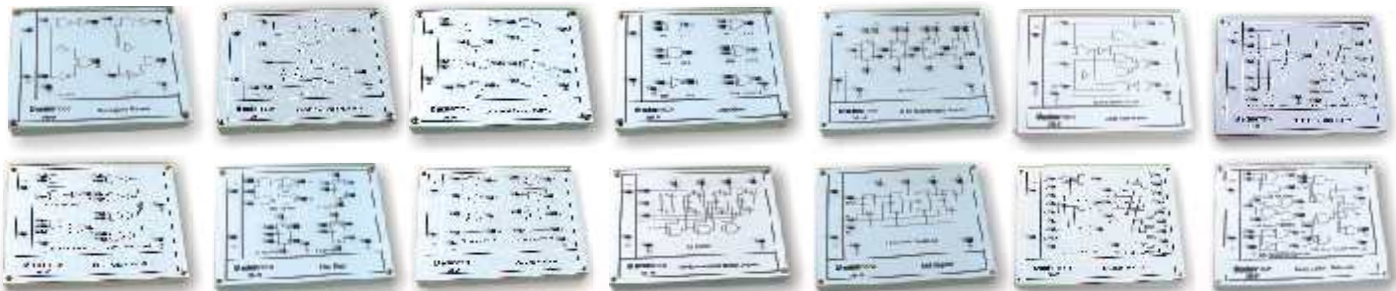
Dimensions (mm) : W325, H90, D255.

Accessories included : Mains cord, Operating and Experimental Manual (with more than 20 designed experiments), Patch cords.

Optional- Ready to use Experiment Boards (covering study of various Logic circuits) with wired components and circuit schematic drawn on top. Compatible to use with Digital Lab ST-2611, Circuit design & test software TinaPro, Component set.

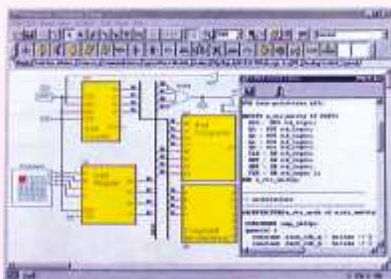


Ready to use Circuit Boards (Optional)



- Logic gates • Universal gate • EX-OR gate Implementation • Demorgan's theorem • EX-OR gate application • Code conversions
- Binary adder-subtractor • Encoder-Decoder • Multiplexer- Demultiplexer • Flip-flops • Shift register (SIPO)
- 4 Bit synchronous binary counter • 4 Bit binary ripple counter **and more.....**

Suggested Optional Product



TinaPro Software :

It is a software package for Designing, Simulating, and Analyzing Analog, Digital and Mixed Electronic Circuits. User can design Digital Circuit and simulate same for **Digital Step by Step** and **Digital Timing Analysis** by using this software. The real time implementation of the designed circuit can be performed on Digital Lab.

subject to change

Scientech Technologies Pvt. Ltd.

94-101, Electronic Complex, Pardeshipura **INDORE**-452 010, India.

Tel. : 91-731-2576472, 5032286, 2556638 **Fax** : 91-731-2555643

Email : info@scientech-india.com **Web** : www.scientech-india.com